

January 2014

Ongoing Overseas Projects

Dear Reader,

Happy New Year! Thanks to readers like you, 2013 was a very successful year for us. We were able to meet our goals and expand our services to clients & prospects because of the confidence in the work we do. *In fact, we thrived because of your incredible support throughout the year.* Hope this year continues to be a year of great happiness and success for all of you .



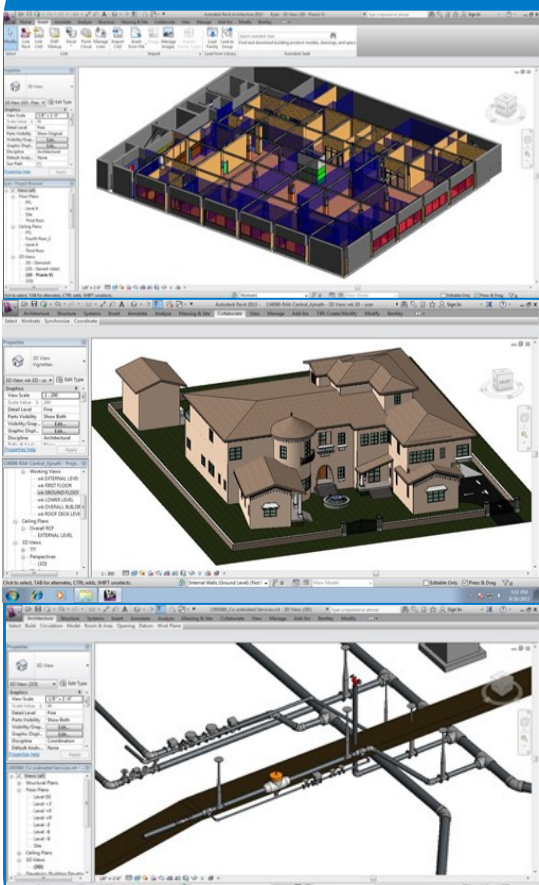
Sonali Dhopte
(Director Excelize)
sonali@excelize.com

★ The Buzz...

Building Information Modeling a "Collaboration between Construction sector & the Software"

Building Information Modeling (BIM) is a collaborative way of working, underpinned by the digital technologies which unlock more efficient methods of designing, creating and maintaining our assets. BIM embeds key product and asset data and a 3 dimensional computer model that can be used for effective management of information throughout a project lifecycle – from earliest concept through to operation. It has been described as a game-changing ICT and cultural process for the construction sector. A number of countries globally are starting to realize the opportunities it brings and are now investing in developing their own capability. BIM processes are 'mainstream' to both new buildings/ infrastructure and have further potential in 'retrofit' and 'refurbishment' projects when complementary workflows such as laser scanning and rapid energy analysis are employed.

Revit Model Images



This is a Hotel Project for one of the world's leading design consultant for the hospitality, leisure and entertainment industries. This Hotel is located in San Diego, California.

On this project Excelize had to update the sketch up model to incorporate the revised design and create a set of drawings for conceptual design package.



This is a Multiple Villas project located in the middle east.

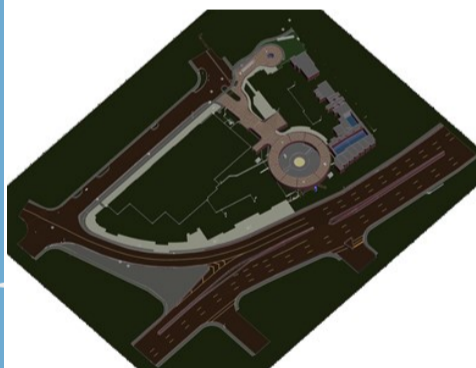
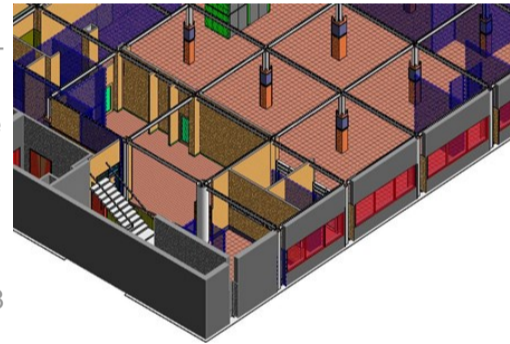
As a BIM Consultant Excelize had to build a Revit Model for the main Villa, ancillary structures like pool house, cabana and the site.

By building the Revit model Excelize assisted the clients design team in validating & visualizing the design intent.

This is a Data Centre Project for Ryan Companies Inc. headquartered in Minneapolis.

Excelize scope was to produce a BIM model for Architecture and Structural elements for one floor of the building.

The LOD for this model was 300. All the work was done in 8 working days.



This is a site infrastructure project for a renowned construction group based in Miami, Florida.

Excelize scope of work was to produce a coordinated BIM model of all the existing as well as proposed underground utilities at the site. In addition to the site utilities, the hardscapes, sidewalk, etc. were also modeled.

The conduits modeled included electrical, data lines, water supply, storm water, etc. All the coordination was done thru emails, phone calls and using web sharing and conferencing services.

Upcoming Events

The Economic Times Acetech

Date: 10-Jan-14 to 12 Jan-14

Venue: Ahmedabad Education Society Grounds, Ahmedabad, India

International Conference on Design Principles and Practices


Date: 16-Jan-14 to 18 Jan-14

Venue: UBC Asian Centre Auditorium, Vancouver, Canada

Inside Outside Megashow

Date: 24-Jan-14 to 26-Jan-14

Venue: Abhash Prashal, Indore, India

 **Contact Us** Excelize Architectural Services Pvt. Ltd.

Block # 11 & 12, Electronic Sadan, Software Technology Park, MIDC, Chikalhana, Aurangabad 431210. Phone (240)2472191 sales@excelize.com
www.excelize.com

Please let us know if you would prefer not to be contacted regarding this information, send e-mail to opt-out@excelize.com and you will not receive any further e-mails from the sender.