


Dear Readers,

It is important to have your views about our news letter. This being the second year of the Newsletter we thank you for your comments and suggestions.

It will be an enjoying work for us if you list a topic you wish to read on BIM.

During the past one year we have tried and improved the layout three times. Also giving

 you various topics for you to update and enjoy on.

Pratap Dhopte  
(CMD Excelize)  
pratap.dhopte@excelize.com

## ★ The Buzz

### Glimpses of past Newsletters

[July 2010 Sustainable Building Design Software:](#)

[August 2010 Benefits of BIM](#)

[September 2010 Why BIM?](#)

[October 2010 BIM Modeling & Revit](#)

[November 2010 Architectural Management](#)

[December 2010 The BIM Story](#)

[January 2011 Migrating from CAD to a BIM platform](#)

[February 2011 BIM is a disruptive technology](#)

[March 2011 Sustainable design](#)

[April 2011 BIM: Changing its face](#)

[June 2011 BIM Services revolutionizing...](#)

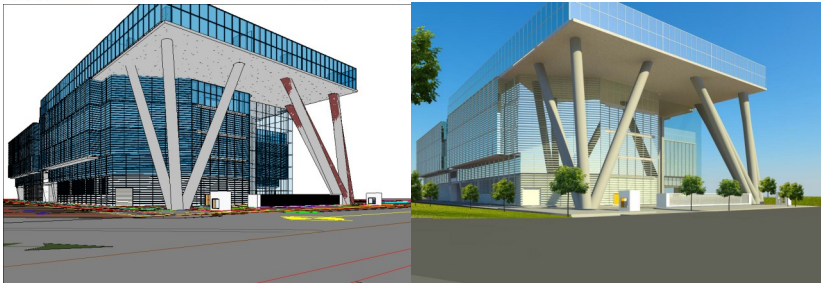
[July 2011 BIM 5 Ways builders can benefit from BIM](#)



To get newsletters of the past one year log on to [www.excelize.com](http://www.excelize.com) along with interesting white papers.



## On Going Projects at Excelize



**India:** Excelize is generating BIM Models for quite a few renowned construction houses of India. BIM application was initially accepted by the contractors as a tool to assist construction. Today major implementation of BIM is for services coordination across complex projects by all consultants and contractors. With the complexity of buildings increasing, the ease with which BIM identifies and addresses structural and services challenges, is the reason for BIM becoming a popular tool. This has made it essential for all types of constructions to implement the BIM technology.

Excelize is presently working on projects in following areas:

1. Hospitality
2. Mall's / Superstores
3. Commercial complexes
4. High rise residential building
5. Site modeling



## THE TECHNOLOGY FOR YOU

### BIM Implementation (Articles Series) Article : 1 Requirements for Training Your Staff in BIM

When moving to BIM, it is not simply an annual software upgrade that the CAD users can teach themselves. Building a BIM model requires the re-education of staff on how a project is designed and documented. If the users are not properly trained and use BIM like 2D CAD, their chances of failure are quite high. If the firm's move to BIM is to be successful, training is required. If training for the staff is not planned, making the change to BIM is not recommended.

One should also consider different types of training for various staff within an office. The most important group that requires training first is the firm owners and senior staff. This is best provided through a half-day presentation that explains and demonstrates why BIM is an essential business decision for their firm. It is important that this group understands all the ramifications of this change and its impact on all levels of their business.

The next group of users that requires training is that of the project managers who do not use CAD day-to-day. A single day hands-on class should be enough time to teach these PMs how to maneuver through the BIM model, find views, add a note, check a dimension, view a sheet and make a plot. It's critical this group understands and can contribute to the organization of their project with their team. If they are not included, they might become alienated from the BIM process. This can have negative implications on the project and result in negativity for firm wide success of the implementation. Project Mangers need this kind of inclusion in the process.

The final group to be trained is the production users. Their hands-on class is the most intensive and will take the longest.

(Excelize Architectural Services Pvt. Ltd. is an Autodesk ATC for training in all its products, It is also an ATP for Siemens for NX, and Solid Edge)



### Upcoming Events

Watertech ,waste, Wastewater & Recycling Technology Expo 28th Sep 2011 To 30th Sep 2011 Ahmedabad

India Build 15th Sep 2011 To 17th Pragati Maidan, New Delhi

Underground Infrastructure & Deep Foundations India September 12 - 13, 2011 \* Novotel Hyderabad Airport, India

2nd Annual Façade Design and Engineering India September 26 - 28, 2011 \* JW Marriott, Mumbai, India



### Contact Us

#### Excelize Architectural Services Pvt. Ltd.

Block # 11 & 12, Electronic Sadan, Software Technology Park, MIDC, Chikalthana, Aurangabad 431210. Phone (240) 2472191

[sales@excelize.com](mailto:sales@excelize.com)

[www.excelize.com](http://www.excelize.com)