



April 2014

Ongoing Project

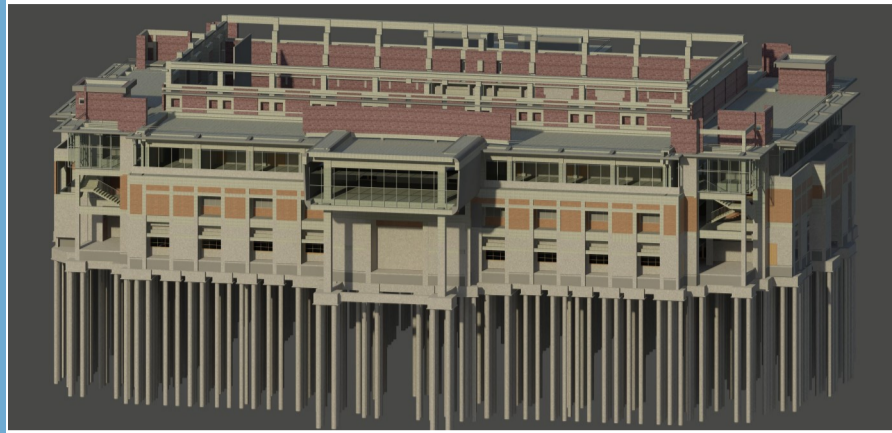
Dear Reader,

BIM is the first truly global digital construction technology and will soon be deployed all across the globe. It is a game changer and we need to recognize that is here to stay – but ion common with all innovation this presents both risk and opportunity.

BIM Embeds key product and asset data and a 3 dimensional computer model that can be used for effective management of information throughout the project life cycle – from earliest concept through operation and hence has been described as a game changing ICT and cultural process for the construction sector.



Sonali Dhopte
(Director Excelize)
sonali@excelize.com



Research Institute Project

Excelize has been working on a research institute campus for a well-known Firm in Western India. Excelize's scope of work included building the BIM model for coordination and quantification services on this project. The research centre has different section of 6 laboratory buildings which include spaces for different kinds of research & experiments.

The challenge on this project **was the location and foundation** due to its marshy land. There were multiple utilities passing under the grade and entering into the building which had floating rat foundations on pile caps.

The Complexity of the services and climatic design posed a big challenge to accommodate the services in the given constraints. Excelize team worked with the site team to resolve the conflicts that arose during the coordination phase.

★ The Buzz...

Excelize IT Park Project Nominated for the **"Be Inspired Awards"** by Bentley and was published in the Year Of Infrastructure Book 2013.

Excelize Architectural Services used BIM technology to design this 22-acre campus near the airport in Mumbai, for an IT Giant of India.

This IT Park provides offices for 2,000 people and features a training center, conference center, cafeteria, library, multipurpose hall, auditorium, and recreation center dispersed among 12 buildings connected by shaded passage ways that provide refuge from Mumbai's intense heat and seasonal monsoons.
www.bentley.com/resources.com/



Birds Eye View of the Site



Technology for you

Benefits and Limitations of Using BIM



Building Information Modeling is a smart Technological Tool that allows a project to be virtually built before being Physically built.

It lets us create and use coordinated and consistent digital information about a building project. This reliable digital information about the building can be used for design decision making, production of high quality construction documents, production predictions, cost-estimating, construction planning and eventually for managing and operating the facility.

Article by Mr. Pratap Dhopte, Chairman & Managing Director Excelize Group of Companies published in Civil Engineering & Construction Review March 2014 Issue (www.cecr.com)



Upcoming Events

Architecture Building Construction Expo & Conferences

Date: 25 – 27 April 2014

Venue: NSIC Exhibition Complex, New Delhi, India

3rd International Conference On Sustainable Innovative Techniques In Architecture, Civil and Environmental Engineering (SITACEE - 2014)

Date: 26 – 27 April 2014

Venue: St. Margaret Engineering College, Alwar, India

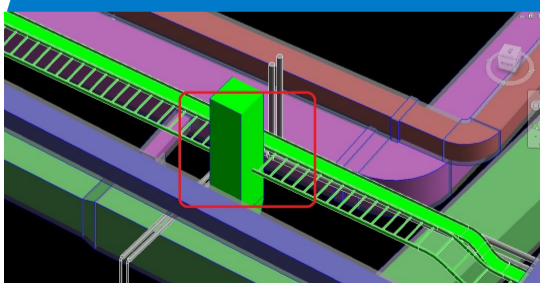


Contact Us Excelize Architectural Services Pvt. Ltd.

Block # 11 & 12, Electronic Sadan, Software Technology Park, MIDC, Chikalhana, Aurangabad 431210. Phone (240)2472191 sales@excelize.com
www.excelize.com

Please let us know if you would prefer not to be contacted regarding this information, send e-mail to opt-out@excelize.com and you will not receive any further e-mails from the sender.

HVAC– Electrical 3D Image



AHSB below ground floor



AHSB below Ground Floor