



May 2014

Ongoing Project

Dear Reader,

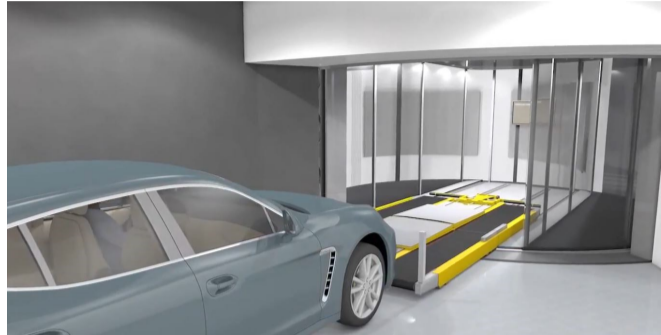
BIM has become a popular buzzword in the construction industry today.

BIM is one of the most promising developments in the architecture, engineering & construction (AEC) Industries.

When implemented appropriately, BIM facilitates a more integrated design and construction process that results in better quality buildings at lower cost and reduced project duration.



Pratap Dhopte
(Chairman & Managing Director Excelize)
pratap.dhopte@excelize.com



High End Residential Tower Project

Excelize is working on this proposed Skyscraper project for one of its prestigious clients overseas.

Excelize was appointed to model the services for this tower project, so as to help the Design build team to use BIM for the coordination purpose. Excelize worked with the sub-contractors of the project to support the coordination process.

The project is a 650 feet high tower with 60 stories housing high end residential apartments. It is unique for its inclusion of a robotic parking garage, having 284 parking spaces for 132 units allowing unit owners to park two or four cars right outside their unit at each floor.

★ **The Buzz...**

Construction technologies are advancing and so is the Indian AEC market maturing to adopt these advancements and setting benchmarks.

BIM can help the architectural, engineering, construction and real estate industries to maintain a pattern of continuous improvement, especially if its insight can be integrated at both the project and organizational levels.

BIM is a sophisticated technology that requires professional expertise for optimizing its potential. BIM offers project owners and its users multiple advantages including creating transparency for project stakeholders, enabling waste reduction and improving profitability by enhancing collaboration.



Technology for you

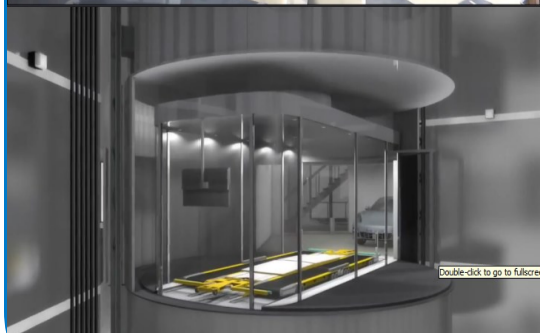
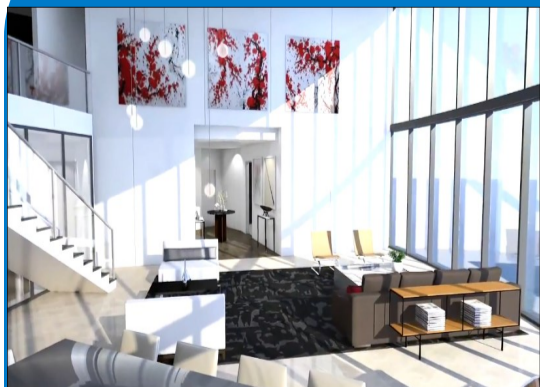
“BIM is today’s new Buzzword”

BIM is not a software, but rather a process to develop an efficient, well-coordinated set of building plans. Building Information Modeling (BIM) is a general term to describe all the information gathered and applied to a building model during design and construction.

BIM uses virtual representations of the actual building materials used to build a building. By using this process, we are able to provide information that sometimes can be lost when the project is passed on from the designer to the production team and onto the contractor.

This new process can greatly decrease errors made by the production team members by allowing the use of “conflict detection” where the program actually informs the design team members about building coordination conflicts or clashing through detailed computer visualization of each part in relation to the total building.

Slowly more and more firms are moving toward BIM, and they are beginning to realize very real benefits that this new technology offers.



Upcoming Events

Ecobuild India

Date: 15 – 17 May 2014

Venue: Bombay Convention and Exhibition Centre Mumbai, India

Roof India

Date: 16 – 18 May 2014

Venue: Chennai Trade & Convention Centre, Chennai, India



Contact Us Excelize Architectural Services Pvt. Ltd.

Block # 11 & 12, Electronic Sadan, Software Technology Park, MIDC, Chikalthana, Aurangabad 431210. Phone (240)2472191 sales@excelize.com
www.excelize.com

Please let us know if you would prefer not to be contacted regarding this information, send e-mail to opt-out@excelize.com and you will not receive any further e-mails from the sender.