



**October 2014**



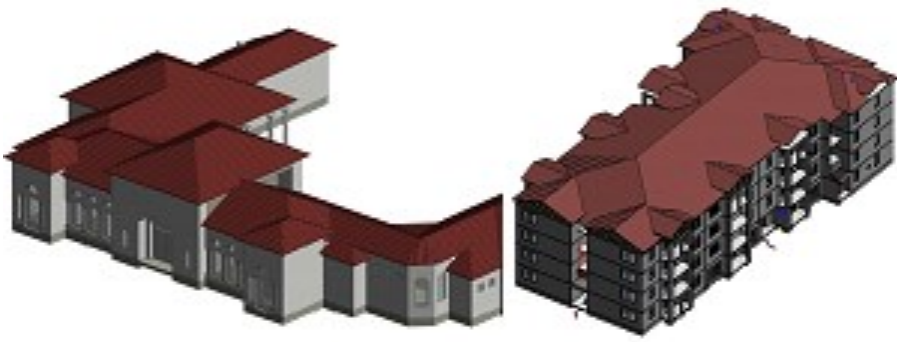
## Ongoing Projects

Dear Reader,

It is important to have your views about our news letter. This being the tenth year of the Newsletter we thank you for your comments and suggestions.

It will be an enjoying task for us if you list topics you wish to read on BIM.

During the past ten years we have tried to update you with the latest updates on BIM and our growth in implementing BIM on various projects.



### Residential Township Project

This is a residential project for a one of the top ENR listed firms in the US. Excelize is appointed as a **'BIM consultant'** to provide modeling, clash detection and documentation services.

The model was generated to coordinate between structure architecture and services. Excelize used the model for generating RFI's and to issue construction drawings on site for execution. The interiors and equipment are modeled at LOD 400 and remaining models were generated at LOD 300.



Sonali Dhopte  
(Director Excelize )  
sonali@excelize.com



## Technology for you

### Importance of Identifying BIM Goals and Uses

**Building Information Modeling (BIM)** as we all know is a process focused on the development, use and transfer of a digital information model of a building project to improve the design, construction and operations of a project or portfolio of facilities.

One of the most important steps in the BIM planning process is to clearly define the potential value of BIM on the project and for project team members through defining the overall goals for BIM implementation. These goals can be based on project performance including items such as reducing the schedule duration, achieving higher field productivity, increasing quality, reducing cost of change orders, or obtaining important operational data for the facility. Goals may also relate to advancing the capabilities of the project team members, for example, the owner may wish to use the project as a pilot project to illustrate information exchanges between design, construction and operations or a design firm may seek to gain experience in the efficient use of digital design applications. Once the team has defined measurable goals, both from a project perspective and company perspective, then the specific BIM uses on the project can be identified.

A BIM Use is a unique task or procedure on a project which can benefit from the integration of BIM into that process. Several examples of BIM Uses include design authoring, 4D modeling, cost estimating, space management and record modeling. The project team should therefore identify and prioritize the appropriate BIM Uses which they have think are beneficial to the project.

### ★ The Buzz...

**Mrs. Sonali Dhopte, (Director Excelize Architectural Services) invited for a Guest Lecture at Rachana Sansad's Institute of Environmental Architecture**

*To decipher the nuts and bolts of architecture, Rachna Sansad organized a special lecture series on sustainability -Thinking Green: way forward -where experts shared their philosophy and practice.*

*The lecture series was meant for students of the Masters Program in Environmental Architecture.*

*Mrs. Sonali Dhopte presented case studies to share her experience of the benefits achieved by our clients by implementing BIM on different types of project*



## Upcoming Events

### **International Conference on Architecture, Civil and Environmental Engineering**

Date: 11-12 Oct 2014

Venue: Jawaharlal Nehru University, New Delhi, India

### **build4india**

Date: 17-19 Oct 2014

Venue: HITEX International Exhibition Centre, Hyderabad, India



**Contact Us** Excelize Architectural Services Pvt. Ltd.

Block # 11 & 12, Electronic Sadan, Software Technology Park, MIDC, Chikalhana, Aurangabad 431210. Phone (240)2472191 [sales@excelize.com](mailto:sales@excelize.com)  
[www.excelize.com](http://www.excelize.com)

Please let us know if you would prefer not to be contacted regarding this information, send e-mail to [opt-out@excelize.com](mailto:opt-out@excelize.com) and you will not receive any further e-mails from the sender.