



STPI Aurangabad

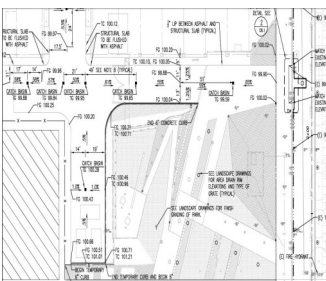
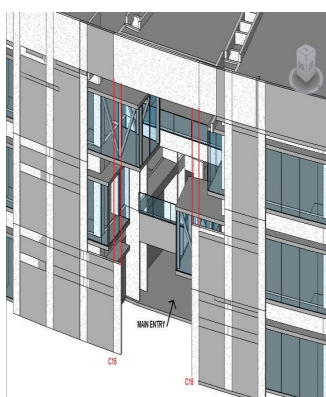


STPI Aurangabad

STPI Aurangabad with state of the art communication facilities. STPI, Aurangabad located in Chikalhana, MIDC is operational from 1st May 2001.

Features

- Global connectivity of 8 Mbps through Ku-band V-SAT system.
- Land line connectivity of 2Mbps from Pune through its own International Satellite Gateway.
- Incubation facility for start up IT companies.
- 15600 sq ft constructed Gala's
- 10 acres for Plots of this 75% already constructed and in use.



Contact us:

Excelize Architectural Services Pvt. Ltd.

Block # 11 & 12, Electronic Sada n, Software Technology Park, MIDC, Chikalhana Aurangabad 431210. Phone (240) 2472191

sales@excelize.com

Excelize Newsletter

September 2010

In this "Information Era" every information has become very important and every individual needs access to information. In construction industry too Information has started its strong hold. Today its the building owners who are driving "BIM needs" for construction industry. This month we bring you some articles which talk about the 'I' of BIM.

"Using 3D technology can be the best way of reducing costs, whilst at the same time, minimizing errors." - Doug Benson, Vice President Lamprell

Sonali Dhopte
Director
Email: sonali@excelize.com



On going Projects :

Science Labs Clinical Research Center

The Scope of the work is to coordinate with team of company architects, generate 'BIM' model, perform clash detection, generate set of services drawings needed for actual implementation.

Other things include 3D models in Revit of the all buildings including architectural, structural and services. The Present work size will be around 1,34,000 Sq Ft.

Good for Construction set:

Excelize has undertaken a Hostel Building project. This is a complete stone cladding building.

- Excelize has designed the entire hostel building.
- Excelize has interacted and coordinated with all the consultants (structural, electrical and plumbing) to gather data needed to generate the set of GFC drawings.
- Excelize has generate BOQs for major construction items (list of items to be included in the contract)



Design News:

Why BIM?

There is a new schedule and estimate and there will probably be further changes. The tenants are eager to take occupancy and there are penalties for delays. Subcontractors are taking shortcuts in order to reduce their costs and keep to schedule, (very difficult to prove afterwards). There are problems with quality. Overall costs are escalating with reports on new cost items being presented daily. Nobody knows what the final figure will be. [More...](#)

Building Owners Driving BIM

Building owners are pioneering this rediscovered technology, commonly referred to as building information modeling, or BIM. After all, these owners are at the very core of the design and construction industry and have the most to gain. They have the power to eliminate the unnecessary waste, in both time and resources, and the associated ... [More...](#)

Dotting the 'I' in BIM

Trying to find ways to avoid information loss is one of the greatest challenges the industry faces when adopting BIM (building information modeling).

One of the hottest topics in the industry today is BIM (building information modeling). Throughout the past few years, almost every CAD (computer-aided design) vendor on the planet with capable technology has attempted to take advantage of the BIM phenomenon. [More...](#)

Upcoming events:

1. To get up coming events for Sept [More.....](#)
2. International Conference on "Innovative world of structural Engineering (ICIWSE 2010) Aurangabad [More.....](#)
3. "International Real Estate Summit 2010" (The largest Convention on Real Estate Sector in India)
Theme: "Real Estate - India Opportunity"
[16th & 17th September 2010, Hotel The Lalit, New Delhi](#)

Please let us know if you would prefer not to be contacted regarding this information, send e-mail to opt-out@excelize.com and you will not receive any further e-mails from the sender.