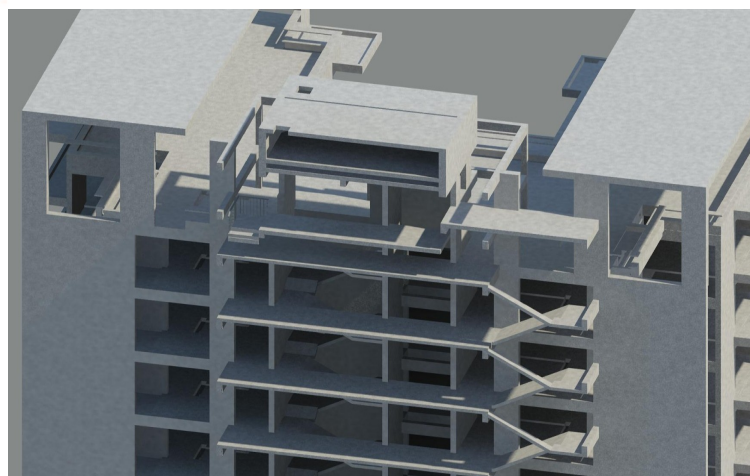


June 2013



Ongoing Projects at Excelize



Residential Development @ Gurgaon

A well known Construction company based out of Mumbai has taken Excelize on Board as BIM consultant for their Premium Residential Development Project. This project is spread approximately across 21 acres of land, comprising of 7 High-rise & 10 Mid-rise towers. Apart from 3D, 4D, 5D, CDR & BOQ's provided Excelize will also be generating a walkthrough for this project.

Dear Reader,

Can There be creations/inventions done without dreams?

All buildings today are the creative dreams of Architects. Technology supports dreamers to expand their scope to greater heights. The genius in Architect is awakened to think in virtual realities.

The past decade has found new themes in buildings, and the next decade shows more dynamicity required in AEC market. New challenges have propped up since due to the pressure of recession affecting the industry since 2010.

Today in mid 2013 industrial business is at a stand still. It is more of a money care or more effectively said as penny care attitude.

There could be no better soothsayer then BIM that can tell about any buildings design details. It is the only application that gives clear understanding about design flaws, costs, process and strengths too.

It is the time if spent in BIM gives unlimited times saving to its cost.

Can you think to be wise by not employing BIM?



Sonali Dhopte
(Director Excelize)
sonali@excelize.com



The Buzz...

India is about to experience a BIM transformation.

AEC companies in India are not completely working on basis of collaborative BIM, which indicates a huge potential for the BIM sector to grow in the coming years.

As industry heads start monitoring projects for cost and time overruns, "the consultants or designers will have to become efficient and thorough with coordinating. At this stage the collaboration will become important and in turn BIM will gain acceptance".



The Technology for you

INTUITION TO DESIGN - via BIM!!!!

As a designer, how often have you wished that, that first inspired sketch which you made could actually become reality without too much getting lost in translation, so to say?

How often have you longed to do away with the outsourcing of the various aspects of a design project, just so that the discrepancies between the teams involved could be nullified?

If these thoughts have bothered you countless times, then it's probably time that you considered **Building Information Modeling (BIM)**.

WHAT IS BIM?

BIM is a path breaking approach to the design, construction and documentation of building projects.

It refers to an intelligent, model-based, integrated design process that provides comprehensive information about a building project, to be shared by all the collaborating teams.

The entire life cycle of the project, right from the initial design, to coordination and construction, and thereon to completion along with all modifications involved along the way, is documented- in the form of graphics as well as information.

HOW DOES BIM FUNCTION?

To cite a very simple example: The architect modifies his design slightly in order to enhance it. This is bound to have repercussions on various other components of the design-like electrical services, structural design, quantities and so on.

The architect knows this instinctively and includes the appropriate changes and notations in his drawings. But the slightest miscommunication or overlooking of the changes by the other persons on the project team could lead to colossal errors, escalating costs and eventually, delayed schedules.

This is where BIM steps in to help. Even the smallest modification incorporated by any member of the project team is relayed to and included in every component of the design affected by that change. When the drawings are viewed by any of the team members, the changes are there for him to see and act upon as required.

SO HOW DOES BIM MAKE DESIGN MORE INTUITIVE?

At a micro level, design has always been an intuitive process. A creative person always creates by instinct. But this need not necessarily translate into coherence in all the related aspects of design. More so in mega scale projects.

This is where BIM fills the gap – at a macro level. It intuitively translates all the related components of a project into one cohesive whole. Change any of the components even slightly, and BIM knows, as if by instinct, which other components are affected and modifies them accordingly for all to see.



Contact Us **Excelize Architectural Services Pvt. Ltd.**

Block # 11 & 12, Electronic Sadan, Software Technology Park, MIDC, Chikalthana, Aurangabad 431210. Phone (240)2472191 sales@excelize.com
www.excelize.com

Please let us know if you would prefer not to be contacted regarding this information, send e-mail to opt-out@excelize.com and you will not receive any further e-mails from the sender.

