



# OCTOBER

**excelize**  
Excellence in Design Management

News letter by Excelize to: (Core group members)

## On Going Projects of Excelize

**Scope of Work:** Tesco plc (LSE: TESCO) is a global grocery and general merchandising retailer headquartered in Cheshunt, United Kingdom. It is the third largest retailer in the world measured by revenues and the second largest measured by profits. It has stores in 14 countries across Asia, Europe and North America and is the grocery market leader in the UK (where it has a market share of around 30%), Malaysia and Thailand.



Excelize has undertaken the digital construction of the building design using Building Information Technology for simulating the construction methodology and endeavors to coordinate the design and construction with prevailing construction practices.

Excelize has built a virtual BIM model for the entire building incorporating the architectural, structural and services and interior components. This model includes the main building, parking and site. The purpose of building the BIM model is to use it as a prototype for all the future stores, as a tool for coordination and clash detection amongst all the disciplines. This model will be used to generate the Bill of quantity (BOQ), for facilities management for all the store display and services maintenance.

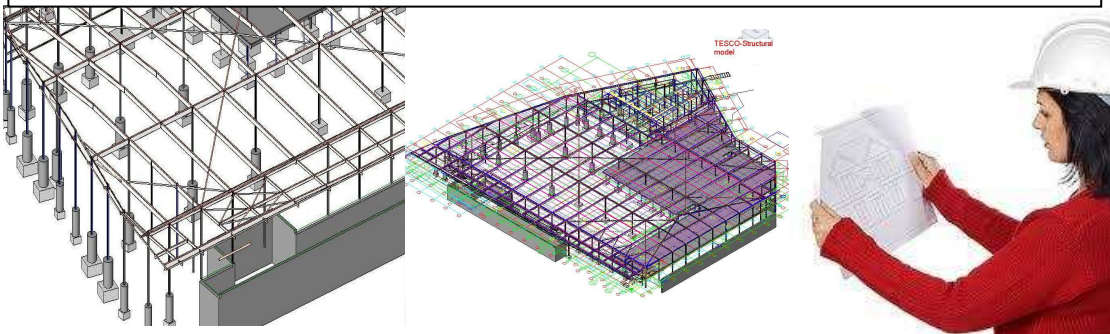


## BIM Modeling & Revit

Let us get the murky picture straightened,

**BIM:** Building information Modeling is a Computer Aided Design (CAD) paradigm that employs intelligent 3D objects to represent real physical building components such as walls and doors. **Whereas,**

**Autodesk Revit** is designing software which helps architects and designers to capture and analyze early concepts, and then better maintain designs through documentation and construction. It is just not CAD software but also monitors building's lifecycle extending itself with a fourth dimension and called as a 4D CAD software. [More.....](#)



Contact us:

**Excelize Architectural Services Pvt. Ltd.**

Block # 11 & 12, Electronic Sadan, Software Technology Park, MIDC, Chikalthana Aurangabad 431210. Phone (240) 2472191

[sales@excelize.com](mailto:sales@excelize.com)

Please let us know if you would prefer not to be contacted regarding this information, send e-mail to [opt-out@excelize.com](mailto:opt-out@excelize.com) and you will not receive any further e-mails from the sender.

Dear Readers,

Recently, the two major questions emerging out of building construction in everyone's mind seem to be BIM & Revit. This article, we will try to get the salient features of both of them & in the process get a brief idea of their usage in the construction Industry.

Further wishing you a Happy Navratri, may this festive season fulfill all your wishes & desires.

**Pratap Dhopte (CMD Excelize)**  
Email: [pratap.dhopte@excelize.com](mailto:pratap.dhopte@excelize.com)



## The Buzzzzz...

### Sustainable Building Design Software

**Autodesk® Ecotect®** Analysis sustainable design analysis software is a comprehensive concept-to-detail sustainable building design tool. Ecotect Analysis offers a wide range of simulation and building energy analysis functionality that can improve performance of existing buildings and new building designs. Online energy, water, and carbon-emission analysis capabilities integrate with tools that enable you to visualize and simulate a building's performance within the context of its environment.

**Whole-building energy analysis**—Calculate total energy use and carbon emissions of your building model on an annual, monthly, daily, and hourly basis, using a global database of weather information.

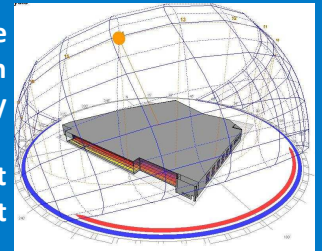
**Thermal performance**—Calculate heating and cooling loads for models and analyze effects of occupancy, internal gains, infiltration, and equipment.

**Water usage and cost evaluation**—Estimate water use inside and outside the building.

**Solar radiation**—Visualize incident solar radiation on windows and surfaces, over any period.

**Day lighting**—Calculate daylight factors and luminance levels at any point in the model.

**Shadows and reflections**—Display the sun's position and path relative to the model at any date, time, and location.



## Upcoming events:

1. INARCON 22 to 24 OCT-10 Chennai [more details...](#)
2. BCI Property Expo 2010 23 to 24 OCT-10 New Delhi
3. CONSTRU India 27 to 30 OCT-10 Mumbai [more details...](#)
4. Roads & Highways Expo 28 to 30 OCT-10 [more details...](#)
5. China International Architectural Expo 20-OCT-10-22-OCT-10