



## On Going Projects at Excelize

Dear Readers,

Wishing every one a "Hindi New Year" the 23rd March 2012 (Saka Era 1933). We wish you all to have a very prosperous year to come with this financial year to begin. Wishing also a very happy year to have the new budget with beneficial support to AEC in India.

The new challenges that arise every day need to be monitored with better technology and team.

Making an effort to help AEC around the world Excelize puts its efforts to design a program for BIM implementation in 3 days. Read our article "The Technology for you."



Pratap Dhopte  
(CMD Excelize)  
pratap.dhopte@excelize.com

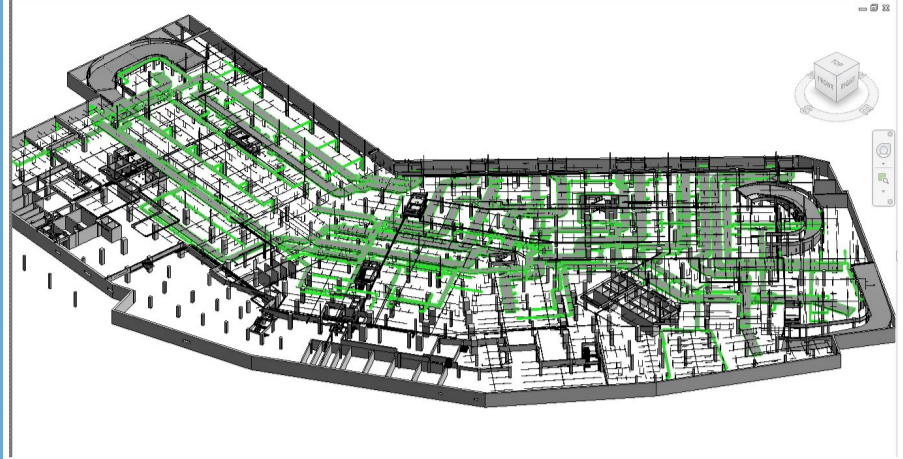


### The Buzz...

#### BIM: the utopia

The press has finally moved on from constant reports about the 'hottest summer since records began' to the news that the world population has just reached 9 billion people. The presenter introduces the story and the camera switches to her colleague reporting live from Beijing, when suddenly some sort of technical error occurs and the image cuts out. She apologizes for the issue and moves quickly onto the next story; Google's launch of their latest addition to their Google Maps platform; Data View. The reporter outside of Google HQ continues; "One of Google's biggest investments to date, Data View is today launched in the United States after years of development and over 20 million dollars of spending. A collaboration with the Institute of American BIM has resulted in this new viewing layer of Google Maps and Google Earth, sandwiched between satellite and street view."

The camera pans to the CEO of Google; "In 2008 when we first developed Google Street view, we recorded very basic, rough 3D models which the static images were then mapped onto; creating an interactive perspective change as the user travels along a street. We have since been developing this concept and recent advances in laser scanning technology have finally allowed us to truly establish this platform. Any non-residential building over 300 square meters has been scanned and an electronic model created, with the intention of eventually producing a full catalogue of BIM data for most buildings worldwide."



#### Five Star Hotel Project @ Mumbai

Excelize is now working with a renowned construction firm in Western India on an area of 15 lac sq. ft. for a Five Star Hotel. We are appointed as a BIM consultant on this project.

Excelize has built BIM models for Architecture, structure & MEPF services, coordinated these models for clash detection and then resolved the clashes in coordination with all the services consultants

After the clashes were resolved, 2D output for the clash free coordinated services was generated from Revit models and delivered to client.

(Note: Due to Non-Disclosure Agreement we will not be able to disclose the company name and actual figures too)



## The Technology for you

### Quick BIM Implementation

#### An Executive Briefing

Hands on overview (A 3 days Excelize model to implement BIM)

#### Duration: 1 Day

**Batch One:** For the principals, senior design staff and the production CAD drafters about glimpses of Revit as a design and production tool used office-wide. The first half of day one is dedicated to an executive briefing for Board members and Senior Design staff to review Revit and its place and impact in the design process. The three hour meeting is a demonstration of Revit including its affect on how a design firm currently produces its CAD design and documentation, how current technology can be included in the transition to Revit and the methodical, economical and effective implementation of this new technology office-wide.

**Batch Two:** The remaining day and a half is a "Hands on" Revit Overview. This overview is designed for Project Managers, Cad Managers and High-end Cad Users to inform them about Revit's key features, methods of use and mind sets for an office-wide implementation of Revit. This is not intended as a formal class but is rather as a hands-on Revit discovery and will include powerful Revit features like the Massing, Design Options and the multi-user Workset feature. Once this overview is done, it is recommended that the attendees then meet with the members of the first meeting to review their thoughts and impressions of Revit.

#### Duration: 2 Days

This service is focused on transferring the office CAD standards from an AutoCAD to a Revit platform. This on-site service is done with the office CAD Manager and two to three advanced Revit users. The EXCELIZE instructor will work with the group on the implementation of Revit focusing on building the core office Revit template file and standards and is designed as a Tips-and-Tricks class for setting up the office standards. This group will observe, note and comment on the tasks EXCELIZE SYSTEMS will provide and thus be shown how to modify the system once the implementation work is completed. With a full scope of customized implementation services, productivity can be maximized for office-wide or project-specific needs, jump-starting productivity within the first week.



### Upcoming Events

#### Inside Outside Mega Show Mumbai

**Date:** 08-MAR -12 to 11-MAR -12

**Venue:** Sekhon Banquet Hall, Chandigarh, India

#### PlumbexIndia 2012

**Date:** 16-MAR -12 to 18-MAR -12

**Venue:** Bombay Exhibition Center, Mumbai, India

#### iBART EXPO

**Date:** 20-MAR -12 to 22-MAR -12



**Contact Us** Excelize Architectural Services Pvt. Ltd.

Block # 11 & 12, Electronic Sadan, Software Technology Park,  
MIDC, Chikalthana, Aurangabad 431210. Phone (240) 2472191  
[sales@excelize.com](mailto:sales@excelize.com) [www.excelize.com](http://www.excelize.com)

