

Dear Readers,

Good Wishes for a joyous Diwali and a Happy New Year with plenty of Peace and Prosperity. The new things to come always bring in a change, And change is one of the biggest reasons for most of the prosperity in any industry.

Every one in the construction and design industry is experiencing a change in the way industry is moving.



Pratap Dhopte
(CMD Excelize)
pratap.dhopte@excelize.com

The Buzz...

BIM is Changing the Design Process

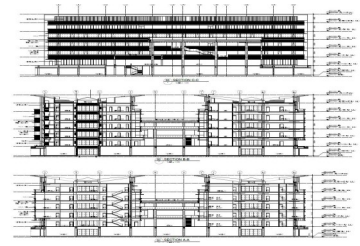
In the past, it was often the case that the more experienced architect with less knowledge of CAD was held hostage by the CAD jockey with less architectural experience. Unlike traditional CAD, a true BIM software application is less about non-architectural CAD terms like "x-referencing", "paper space" or "display level" and more about architecture and architectural issues. BIM is ideally suited for an experienced design professional who can guide the junior staff. Since more discussion with team members is about architecture and less about CAD, BIM is reactivating the once lost Master / Mentor relationship.



www.excelize.com is now more useful and friendly with interesting articles, newsletters, portfolio samples, testimonials and more.



On Going Projects at Excelize



With good growth in construction industry in India, the AEC firms have made their go for BIM as the new tool for quality and other benefits from it. With quality and design becoming more competitive it has become difficult to name every client Excelize is working with.

Instead we can now easily talk about type of work that Excelize is doing. Excelize has uniqueness in every project completed. Excelize services are extensively being used by an Internal Design and Construction firm of repute. The scope of work is to model a fully constructed building and compare it with a design model to be developed for the firm. Giving details of BOQ's, clash detection which will help in generating a cost saving factor for construction.

Apart from this there are some IT parks, commercial buildings and residential towers that Excelize is working with. With the shortage of space a new need of Multi Level Car Parking (MLCP) has come which adds new technological service in construction industry making effective use of space.



The Technology for you

**BIM Implementation (Article Series) Article 3
3D, 2D or Both**

There is a misconception that BIM is all 3D. Excluding the importing of 2D CAD, a true BIM is both 3D and 2D. The level to which one builds the model in 3D depends on the needs of that client. An architect's BIM is partially 3D and 2D. There is no need for an architect to draw a backer rod or window flashing in 3D. Items such as these would be drafted as 2D elements. That detail view now includes 2D annotation and graphics placed on top of the 3D elements from the model or in a separate 2D view.

On the other hand, a BIM for a contractor is a very different model and typically requires a higher percentage of modeling in 3D. If the contractor needs to phase the model for site logistic diagrams, the model needs to be reorganized to clarify when elements in the model are built and when they are removed; this requires the elements modeled in 3D. From a cost estimating point of view, the contractor needs to be able to extract quantities from the BIM thus increasing the probability that components like backer rods or window flashing be built in 3D. Once built, these same 3D BIM components can be scheduled from the model, counted and then priced. The last is coordination for clash detection. The contractor will have an interest using the BIM in determining clash detection between various trades such as architectural, structural and MEP prior to the construction of the project. The ideal scenario for a contractor is to build each project twice: the first construction determines all the errors and clashes which guides a smooth construction the second time around. In this case, a BIM is the first model and the live construction is the second model.



Upcoming Events

URBAN INFRA WORLD EXPO

Date: 19-OCT-11 to 22-OCT-11

Venue: Bombay Exhibition Centre (BEC), Mumbai, Maharashtra



Contact Us

Excelize Architectural Services Pvt. Ltd.

Block # 11 & 12, Electronic Sadan, Software Technology Park,
MIDC, Chikalthana, Aurangabad 431210. Phone (240) 2472191
sales@excelize.com www.excelize.com